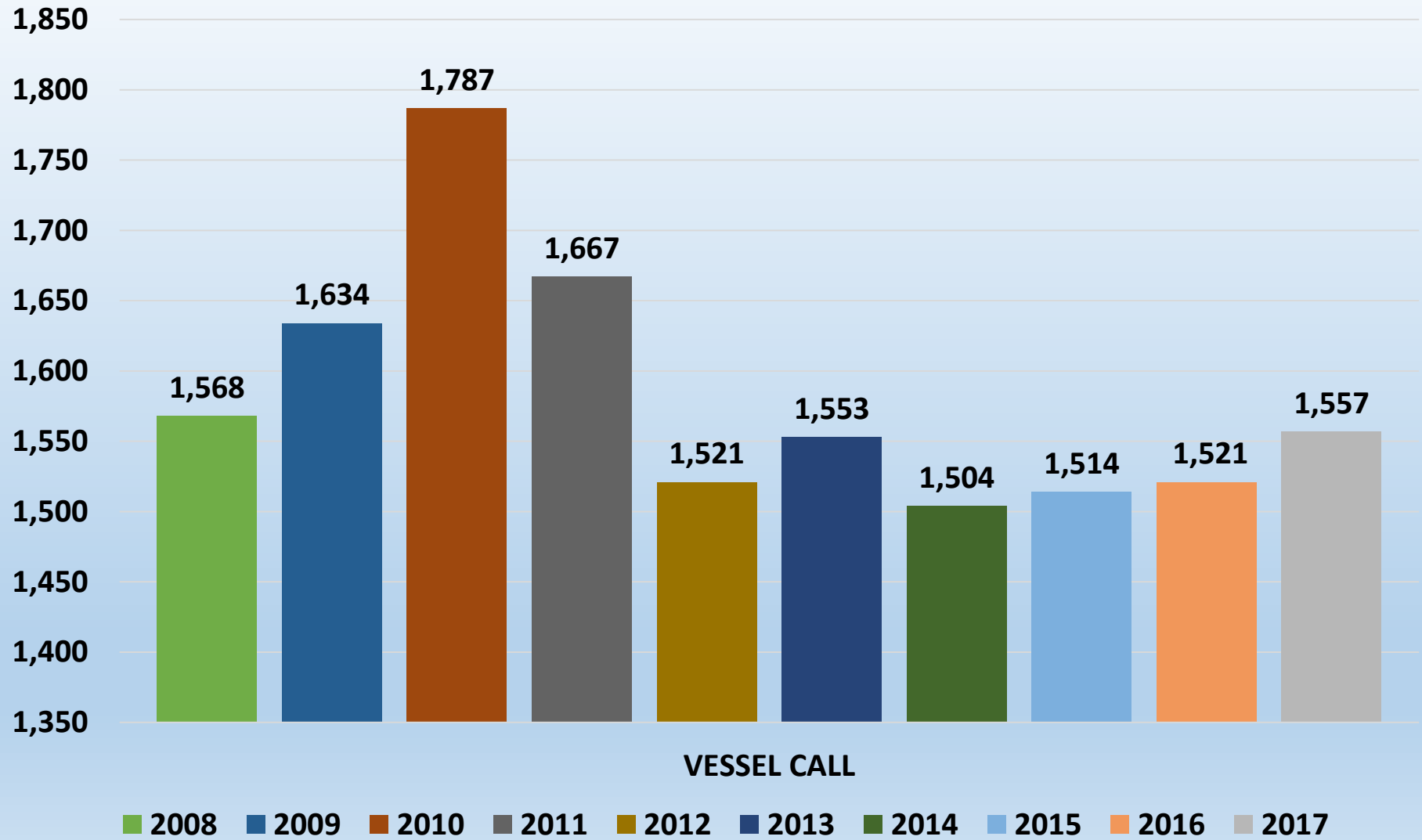


TEMA PORT PERFORMANCE 2008-2017

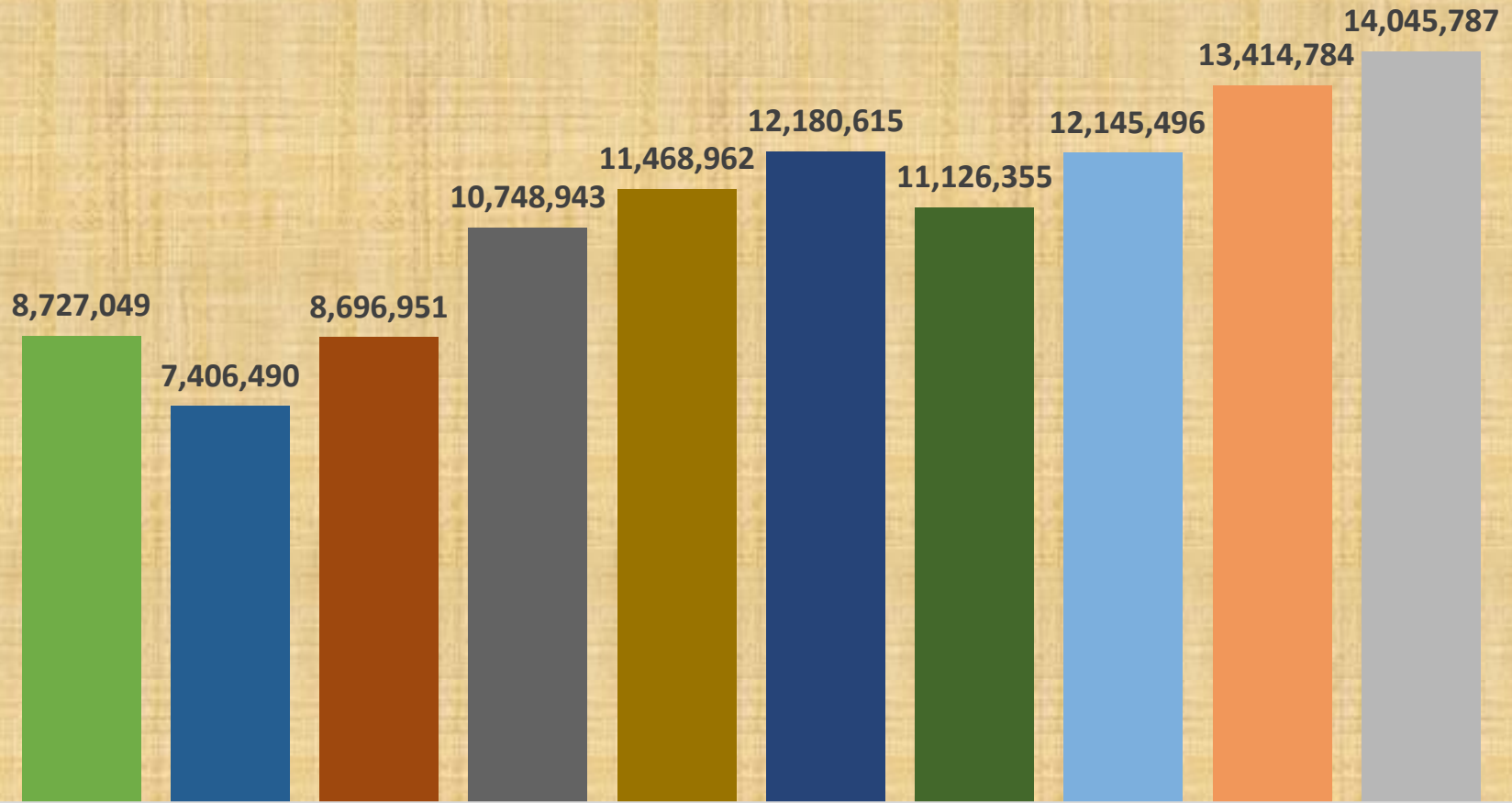
YEAR	VESSEL CALL (UNITS)	TOTAL CARGO TRAFFIC	EXPORT	IMPORT	TRANSIT	TRANSHIPMENT	CONTAINER TRAFFIC
		TONNES					TEUS
2008	1,568	8,727,049	1,305,451	6,259,412	864,307	195,326	555,009
2009	1,634	7,406,490	981,075	5,694,280	509,124	192,565	525,694
2010	1,787	8,696,951	1,154,826	6,823,488	447,071	236,615	590,147
2011	1667	10,748,943	1,532,139	8,431,531	614,078	171,195	756,899
2012	1,521	11,468,962	1,477,390	9,383,462	530,457	50,403	824,238
2013	1,553	12,180,615	1,493,956	10,014,243	620,668	51,748	841,989
2014	1,504	11,126,355	1,463,273	8,922,550	577,227	163,305	732,382
2015	1,514	12,145,496	1,303,090	10,043,146	722,508	76,752	782,502
2016	1,521	13,414,784	1,633,036	10,890,084	862,377	29,287	893,841
2017	1,557	14,045,787	1,646,253	11,327,502	1,043,771	28,261	956,374

VESSEL CALLS 2008-2017



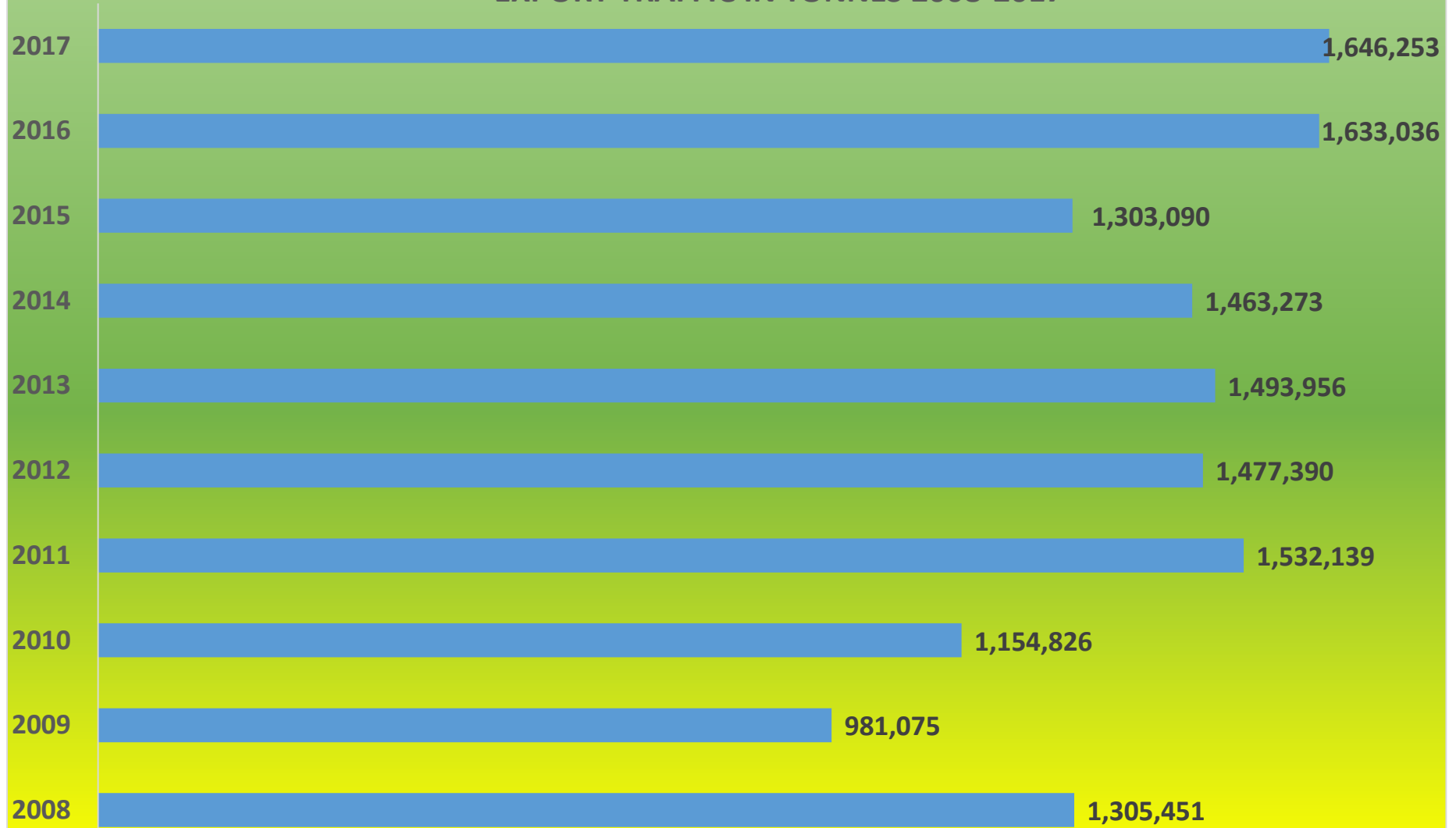
CARGO TRAFFIC IN TONNES 2008-2017

2008 2009 2010 2011 2012 2013 2014 2015 2016 2017

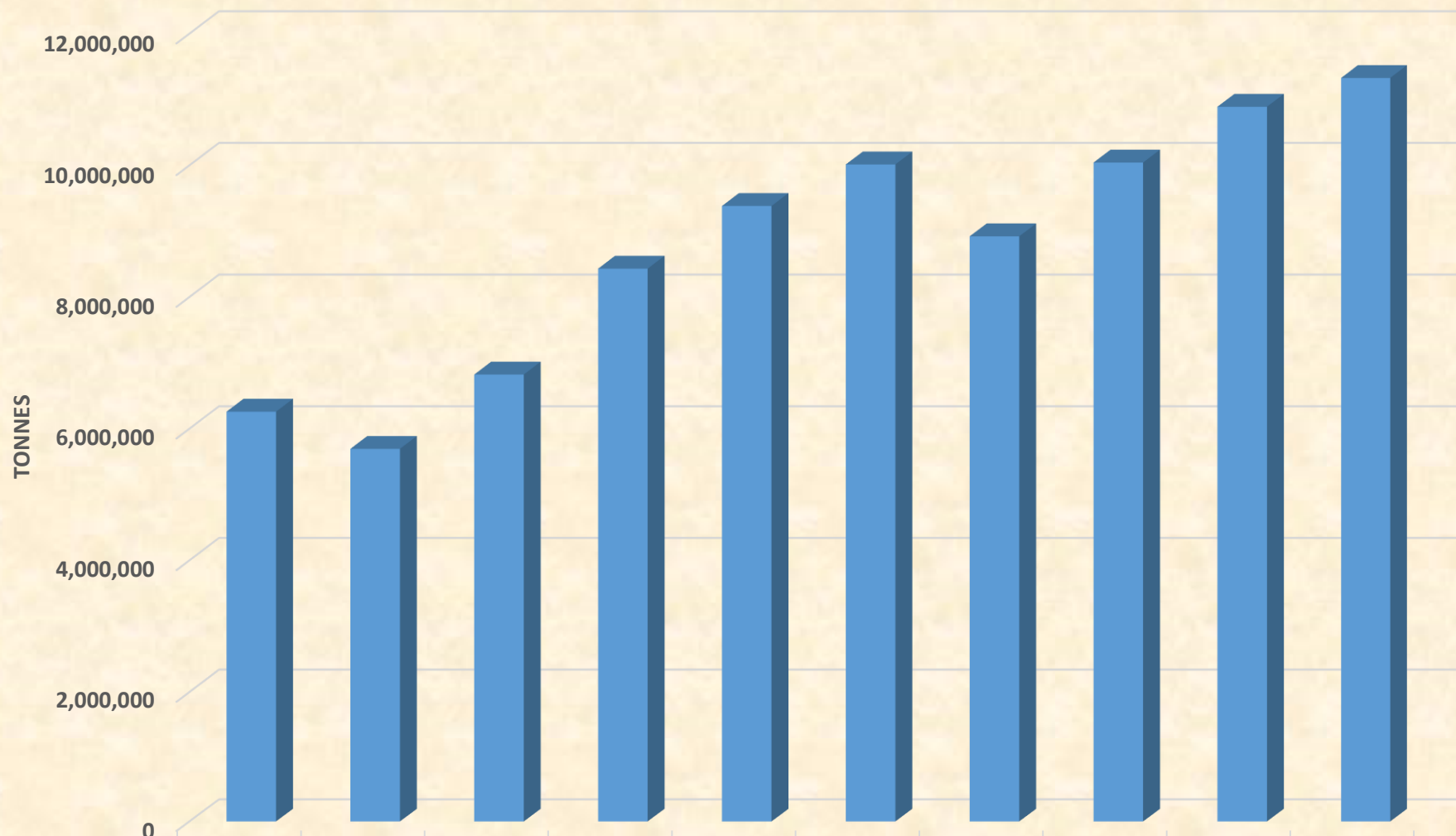


TRAFFIC

EXPORT TRAFFIC IN TONNES 2008-2017

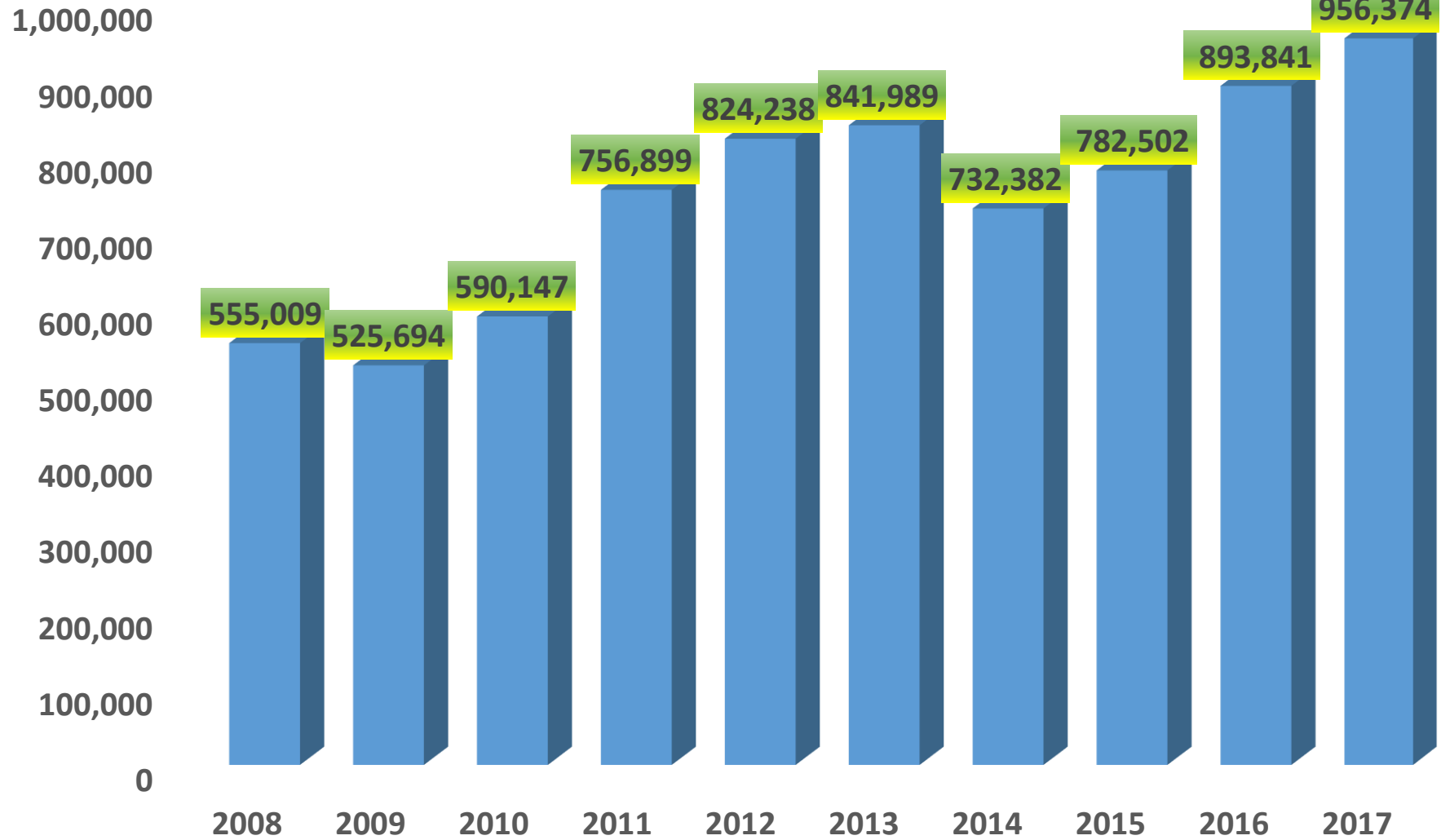


IMPORT TRAFFIC IN TONNES 2008-2017

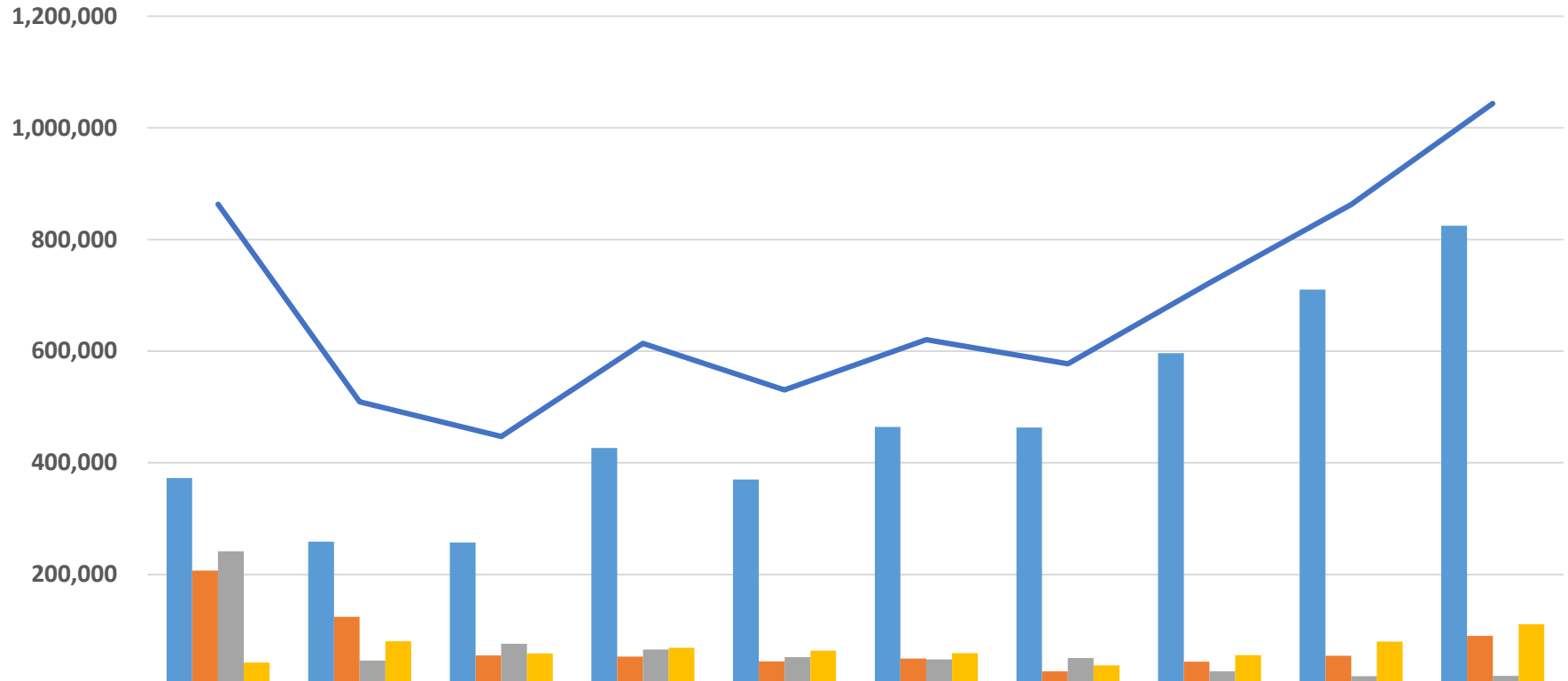


	2008	2009	2010	2011	2012	2013	2014	2015	2016	2017
■ IMPORT	6,259,412	5,694,280	6,823,488	8,431,531	9,383,462	10,014,243	8,922,550	10,043,14	10,890,08	11,327,502

CONTAINER TRAFFIC IN TEUs 2008-2017



TRANSIT TRAFFIC BY DESTINATION 2008-2017



	2008	2009	2010	2011	2012	2013	2014	2015	2016	2017
B. FASO	372,719	258,829	257,552	426,502	370,325	464,104	463,339	596,277	710,198	824,877
MALI	207,092	124,346	55,153	53,155	44,550	49,606	26,449	44,024	54,311	89,942
NIGER	241,417	45,697	76,036	65,727	51,722	47,974	50,217	26,469	17,950	18,195
OTHERS	42,124	80,252	58,329	68,694	63,860	58,984	37,222	55,738	79,918	110,757
TOTAL	863,352	509,124	447,071	614,078	530,457	620,668	577,227	722,508	862,377	1,043,771

B. FASO MALI NIGER OTHERS TOTAL

TRANSHIPMENT TRAFFIC IN TONNES 2008-2017

